



Management System
ISO 9001:2015



Republic of the Philippines
CAMARINES NORTE STATE COLLEGE
F. Pimentel Avenue, Brgy. 2, Daet, Camarines Norte

OFFICE OF THE BAC CHAIRPERSON FOR GOODS AND SERVICES

October 23, 2019

ADDENDUM NO. 1
Series of 2019
SUPPLY AND DELIVERY OF FURNITURE AND FIXTURES

This Addendum No. 1 for the project Supply and Delivery of Furniture and Fixtures is being issued in accordance with Revised IRR of R.A. 9184 specifically section 22.5.2 & 22.5.3

This is to inform the prospective bidders of the herein attached corrected Schedule of Requirements in the Bidding Documents under Section VI – Schedule of Requirements.

This Addendum shall form integral part of the Bid Documents.


ROSALIE A. ALMADRONES, Ph.D
BAC Chairperson for Goods and Services



ANNEX A

SUPPLY AND DELIVERY OF FURNITURE AND FIXTURES

Item No.	Quantity	Unit of Issue	Description	Unit Cost	Total Cost
1	45	units	Customized Table for CBPA Faculty (Steel Body with Mobile drawers)	14,000.00	630,000.00
2	45	units	Chair	2,700.00	121,500.00
3	1	unit	Executive Table - Deans Office	21,100.00	21,100.00
4	2	units	Water Dispenser	10,000.00	20,000.00
5	4	units	Steel Cabinet - 4 drawers (vertical)	13,900.00	55,600.00
6	14	unit	Smart TV	65,000.00	910,000.00
			Screen Type: LED/LCD		
			Screen Size: 55"		
			Resolution: 3840 x 2160		
			Backlight Type: Direct		
			Viewing Angle: Wide Viewing Angle		
			Picture Quality: Tru Motion 100 (Refresh Rate 50Hz); DCI 80%; 3D Color		
			Mapping: 4K Upscaler		
			Sound Quality: Speaker System: 2.0Ch/20W; Surround Mode: Ultra Surround		
			Operating System: webOS 3.5		
			Processor: Quad Core		
			Connectivity: WiFi Built-in (802.11.ac); Smart Share: DLNA/Miracast/WiFi		
			Direct Mobile Connection: Yes		
			Input & Output: HDMI 2.0A:3; HDMI Arc: Yes; USB 2.0/3.0: 2/0; LAN: 1;		
			Headphone Out: 1		
7	1	unit	Counter Table	35,000.00	35,000.00
8	2	units	Baggage Counter	30,000.00	60,000.00
9	2	sets	L-Shape Sofa (W-33 in, L-86 in, W-80 in, H-34 in)	49,000.00	98,000.00
10	1	set	Small Sofa (1 Long, 2 single)	19,000.00	19,000.00
11	2	units	LED TV	35,000.00	70,000.00
			TV Type: LED, Smart TV		
			Screen Size: 55 inches		
			Resolution: 1920x1080		
			Full HD: Full HD		
			LED Backlight: Yes		
			HDMI: 3		
			LAN Terminal: Yes		
12	3	pcs	Locker Cabinet	30,000.00	90,000.00
			Made of wood		
			Length: 250 cm, Height: 170 cm, Width:		
			8 rows x 4 columns with each door and handle		
			Color: gray		
13	1	set	Sofa	37,537.50	37,537.50
14	1	unit	Refrigerator 7.6 cubic, 2 doors compliant to green technology	26,000.00	26,000.00
15	4	units	Stock Cabinet (Glass Type)	40,000.00	160,000.00
16	1	unit	Refrigerator, upright compliant to green technology	20,000.00	20,000.00
17	1	unit	Freezer	35,000.00	35,000.00
18	1	sets	Sofa with Center Table (leatharete)	20,000.00	20,000.00
19	1	sets	Sofa	20,000.00	20,000.00
20	2	set	Conference Table	20,000.00	40,000.00
23	1	unit	Glass Cabinet with Aluminum frame with 16 shelves (94 inches(L)x84(H)x18(W)	26,500.00	26,500.00

24	1	unit	Counter Cabinet Top with Sink (180 cm x 60 cm)	22,500.00	22,500.00
25	6	units	Office Table	20,000.00	120,000.00
28	15	pcs	Book shelves	19,733.33	296,000.00
			Two-sided Bookshelves (6 layers) 25mm thk Santa Clara marine board in light grey (color: glazed gray)		
			paint finish.		
			Dimension: W1200mm x D 50mm x H 2140mm		
29	1	unit	LED TV	30,000.00	30,000.00
			TV Type: LCD, LED		
			Screen Size: 40 inches		
			Resolution: 1920x1080		
			Full HD: Full HD		
			LED Backligh: Yes		
			HDMI: 2		
			Dimension (WxHxD): With stand: 910 x 571 x 194 mm. Without stand: 910 x 525 x 92 mm		
			Weight: With stand: 8.5 kg/ Without Stand: 7.5 kg		
30	1	set	Drinking Fountain with installation	25,000.00	25,000.00
31	5	units	Modular Partition with Cabinet	55,000.00	275,000.00
32	1	set	Massage Chair	70,000.00	70,000.00
33	2	pcs	Office Table with Chair	25,000.00	50,000.00
34	2	set	Customized Library Sofa	32,500.00	65,000.00
36	2	units	Flat Screen TV	20,000.00	40,000.00
			Product Type: LED		
			Display: Screen Size: 43"; Resolution: 1920x1080		
			Video: Picture Engine: Hyper Real; Motion Rate: 60; Picture Quality Index: 300		
			Audio: Dolby Digital Plus; Sound Output (RMS): 20W(L:10W, R:10W); Speaker		
			Type: 2CH		
			Connectivity: HDMI: 2; USB: 1; Component In (Y/Pb/Pr): 1 Composite In (AV): 1		
			Digital Audio Out (Optical): 1		
			Design: Design: Mold; Bezel Type: VNB; Slim Type: Semi Slim; Stand Type:		
			Mini Arc		
			Power: Power Supply: AC100-240V 50/60 Hz; Power Consumption (Max):		
			70W W		
			Dimension: Package Size (WxHxD): 1094.0 x 164.0 x 668.0 mm; Set		
			Size with Stand (WxHxD): 967.4 x 590.6 x 159.5mm; Set Size without stand		
			(WxHxD) 967.4 x 571.8 x 79.9 mm		
			Weight: Package Weight: 10.2 ± 0.5 kg; Set Weight with Stand: 7.4 ± 0.3kg;		
			Set Weight without stand: 7.3±0.3 kg		

TOTAL 3,508,737.50

**1. Customized Table for
CBPA Faculty (Steel Body
with Mobile Drawers)**



**Color: BEIGE
W1200 D600 H750mm**



**Top - Glass with
design**

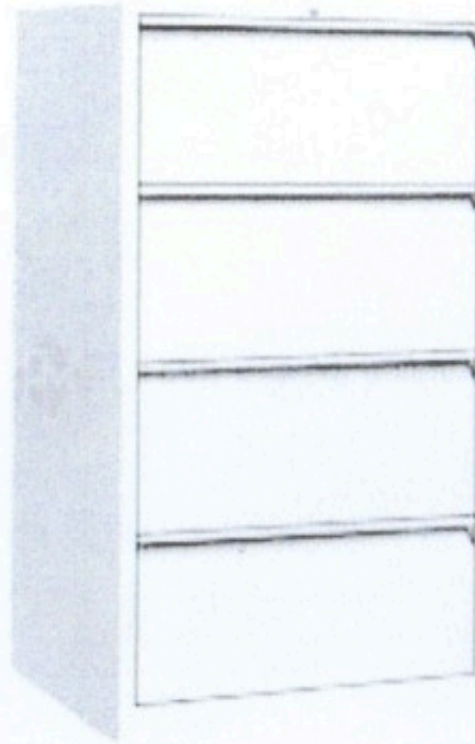


② Chair



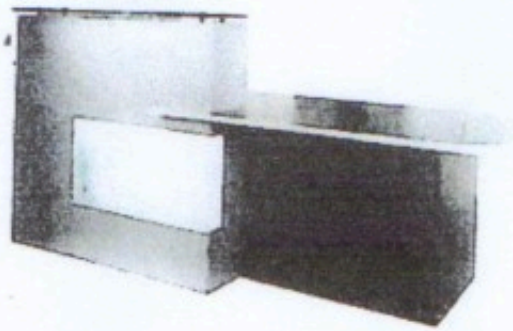
**3. Executive Table
Deans Office**

⑤ Steel Cabinet
- 4 drawers (vertical)



W900 D450 H1328mm

4 drawers -
vertical



Counter top sink

8

Baggage Counter



#9



Dimensions: L-Shape
width: 33 in.
length: 86 in.
width: 80 in.
height: 34 in.

L-shape Sofa

Small Sofa

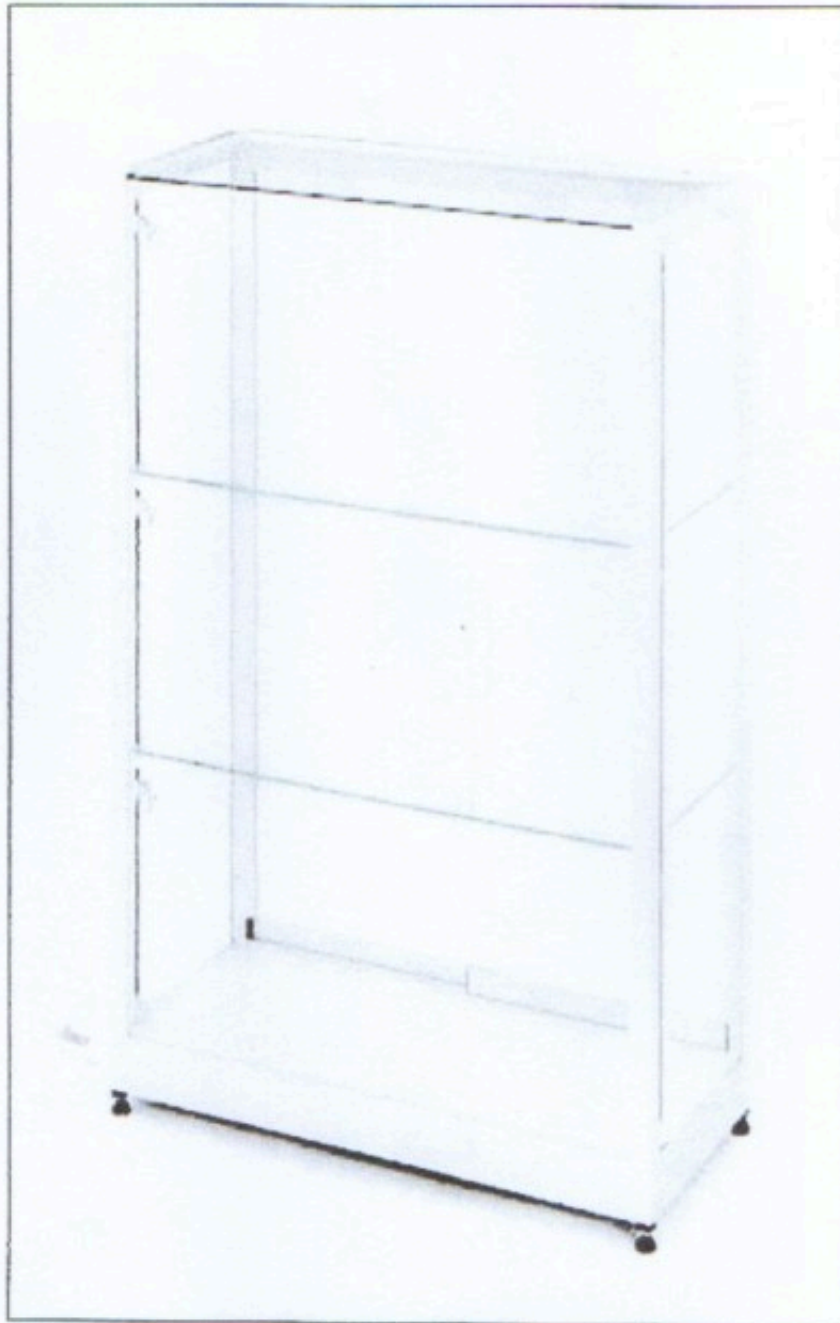
#10



#13



Sya



15

STOCK CABINET GLASS TYPE

Glass type (tempered glass)

Sliding glass door

Clear-coat Aluminum frame

51"H x 40"L x 20" W

- 3" foot or stand-added to actual measure of overall Height

AMK



11 cu.ft. Glass Top Chest Freezer (White)

17

11 cu.ft. Glass top chest freezers

220V/280W

EER: 197

Dual function/Clean back design

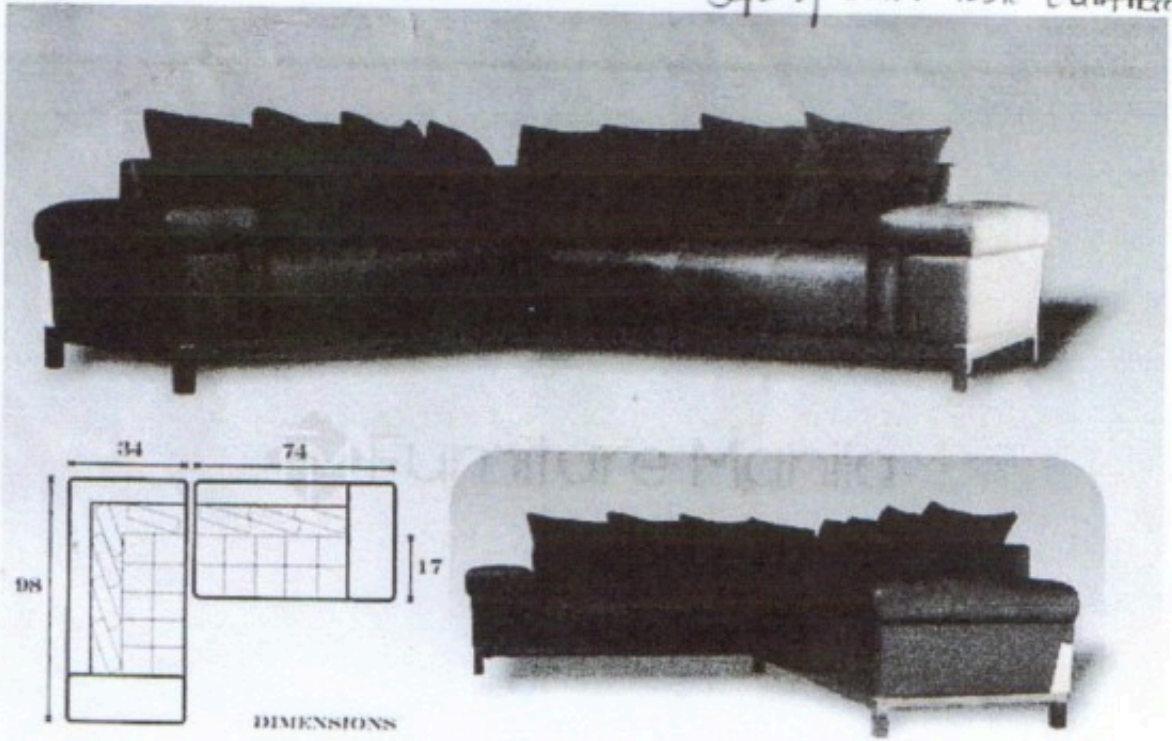
Frontal temperature control/Frontal drain

Aluminum inner lining/Roller feet

Key lock/ 2 wire baskets

Sala Set (Leatherette)

#118
Sofa w/ Center Table (Leatherette)



19



OR



#20

Conference Table



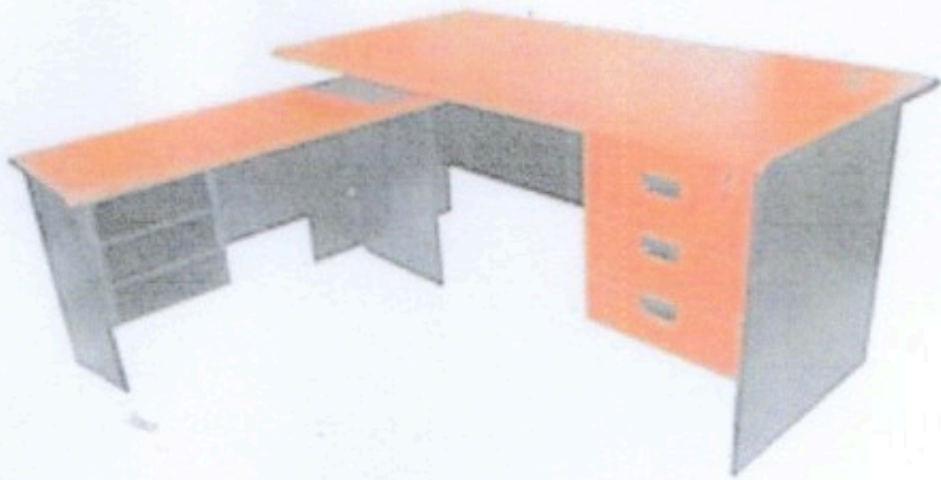
#24



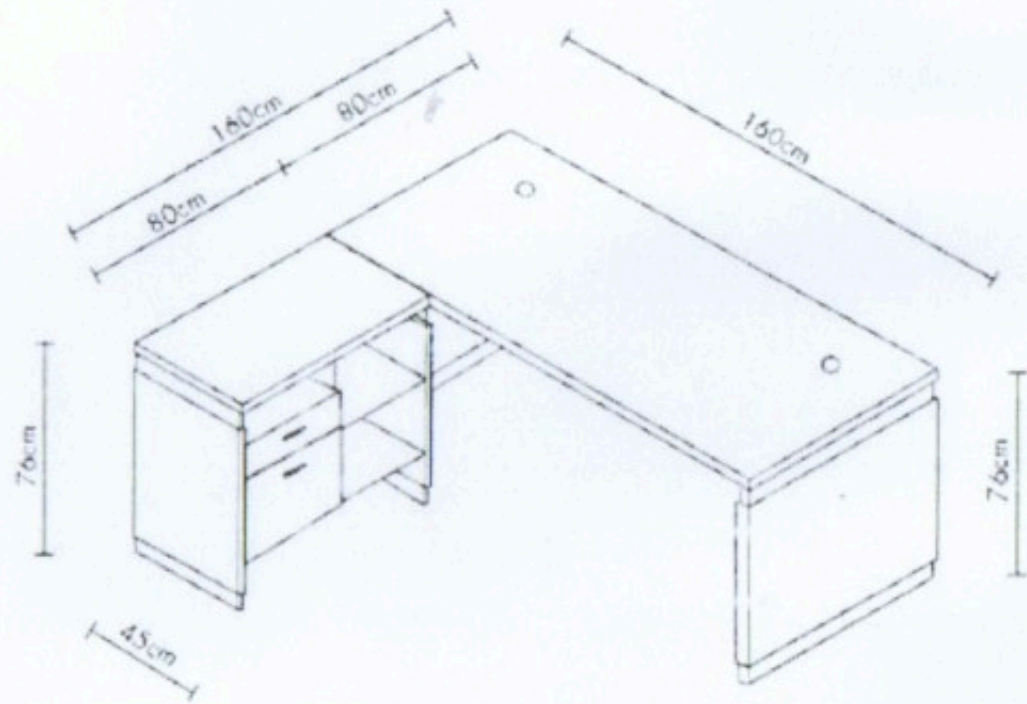
circle top of sink 18 in x 60 in

Office Table.

25



25





1.60 M
 .60 M 1. M 1.60 M

Registrar

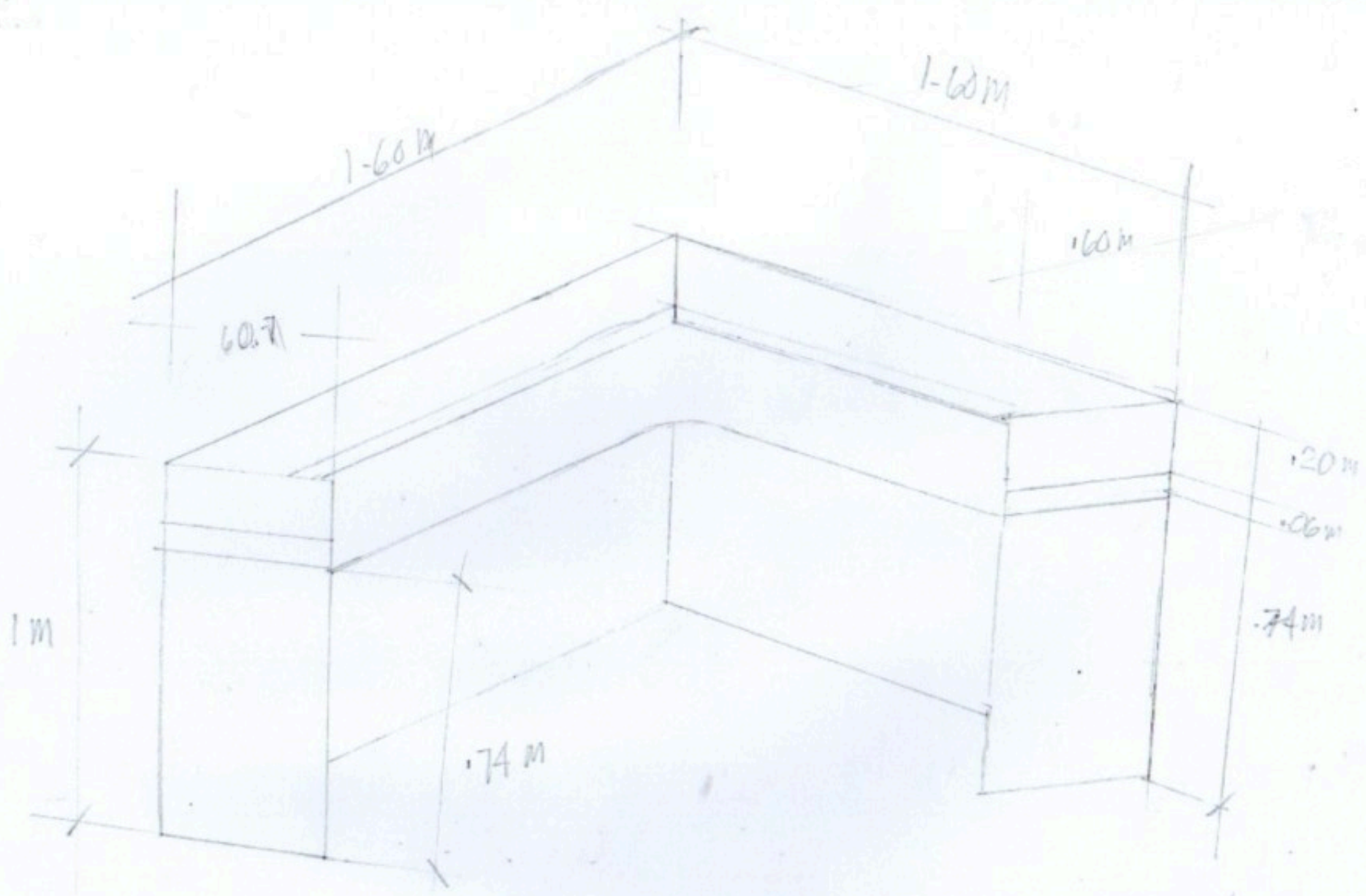
.70 M
 .55 M
 .74 M

1.60 M

.60 M

3) Modular Partition w/ Cabinet

.60 X 1.60 X .74 M
 CPU STAND - .25 M X .50 M X .25 M



CPU STAND - 250 X 50 X 250 mm



OR



2. 167
1. 167

1607

Also available in 1.8 size



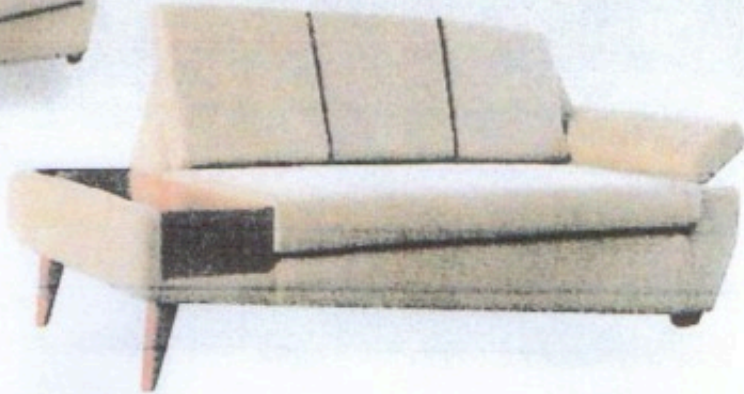
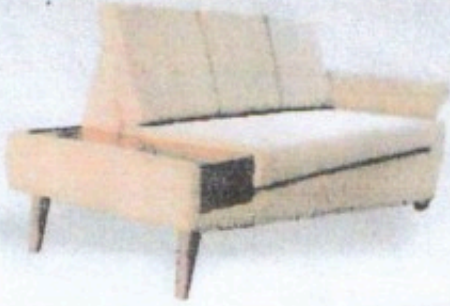
SPECIFICATIONS: L-type Glass top Executive Table
SIZE (cm): 1.6 : 160*80*76cm
 1.8 : 180*80*76cm
COLOR: Black

Executive table

Library

H34

Dimension: Custom Chair Lounge
W: 34"
L: 32"
H: 36"



Customized by a

